

GIZZARD OPENER

WITH AUXILIARY SKINNER



AUTOMATED HIGH QUALITY GIZZARD PROCESSING MACHINE

HIGH QUALITY, HIGH PRODUCTIVITY

High quality gizzard can be produced by simply placing on the GIZZARD OPENER.

MAYEKAWA
MYCOM

GIZZARD OPENER

WITH AUXILIARY SKINNER

FEATURES

1. Easy operation

Easy operation by correctly placing gizzard on the machine.

2. Auxiliary skinner

Highly efficient skinning in a subsequent manual processing by using integral auxiliary skinner.

*Approximately 60-70% of inner yellow skin can be removed by auxiliary skinner subject to the conditions of raw material.

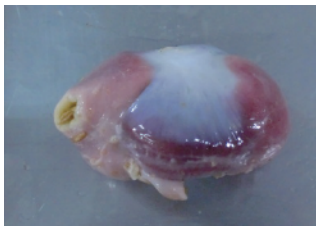
3. Easy maintenance and wash down

Easy maintenance and wash down by simply removing auxiliary skinner.

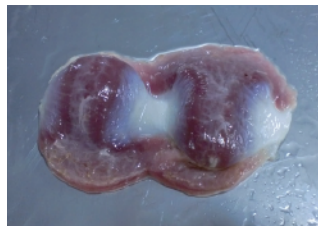
4. Safety

Safe working environment by safety sensors installed on loading and protection cover areas.

PROCESSING IMAGE - OUTER DIMENSIONS

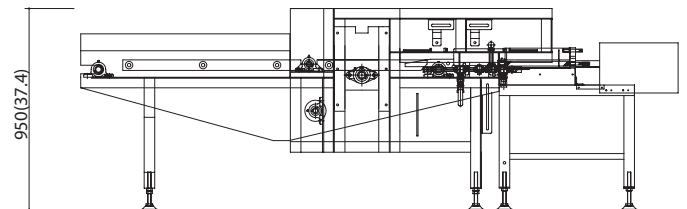
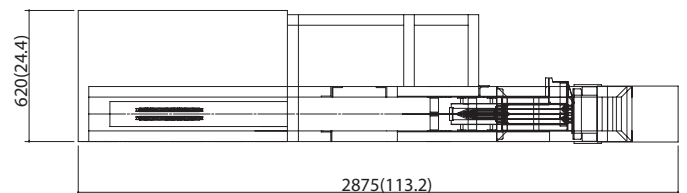


Input



Output

Dimensions [mm(in)]



SPECIFICATIONS

Capacity	4,500 pieces/hour, maximum	
Model	MGZ33	
Applicable raw materials	Broiler Gizzard (25~50g or 0.8~1.6oz/piece)	*1
Standard dimensions	2,875mm(L)×620mm(W)×950mm(H) [113.2in(L) x 24.4in(W) x 37.4in (H)]	*2
Weight	280kg(620lbs)	
Utility	Electricity	3φ 200V 1.5kW
	Water supply	20ℓ/min (0.7CFM)
Option	Manual skinner	Finishing machine to remove inner yellow skin.

* 1 Please contact us for chicken species other than broiler.

* 2 Height is without the control panel.

MAYEKAWA
MYCOM

The information on this brochure is subject to change without notice.

MAYEKAWA MFG.CO.,LTD.
3-14-15,Botan,Koto-ku,Tokyo 135-8482, JAPAN Tel.(81)-3-3642-8181 Fax.(81)-3-3643-7094
Robot & Engineering Division
Tel.(81)-3-3642-8966 Fax.(81)-3-3642-8271
<http://www.mayekawa.com>

MAYEKAWA (THAILAND) CO., LTD.
2/3 Moo 14, Bangna Tower, Tower A, 4th Floor,
Bangna-Trad Road, Bangkaew, Bangplee, Samutprakarn 10540
TEL: +66 2-751-9610
<https://www.mayekawa.co.th>
Contact : Sales@mthh.co.th

